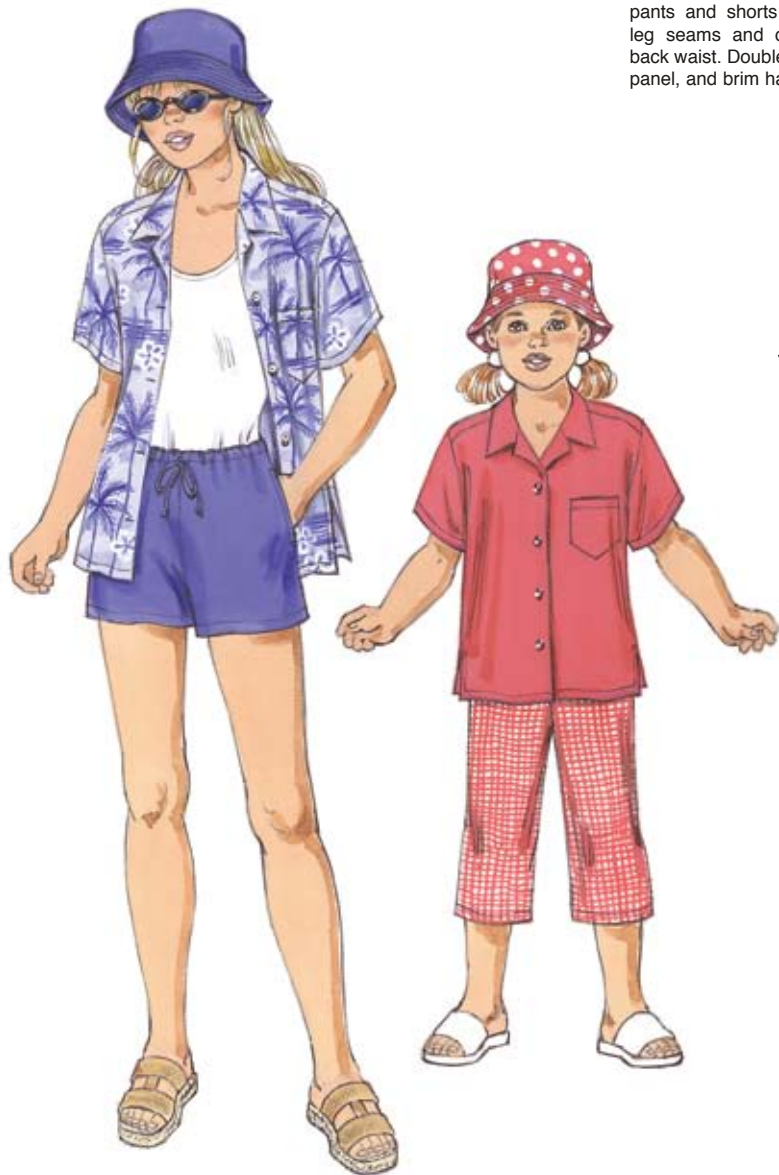
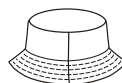


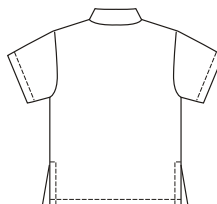
Girls' shirt, shorts, cropped pants and hat. Shirt has extended shoulders, collar, pocket, short sleeves, and side hemline slits. Pull-on pants and shorts have pockets in outside leg seams and drawstring with elastic at back waist. Double layer hat has crown, side panel, and brim has topstitching.



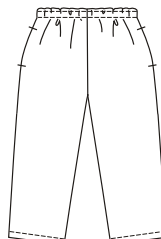
HAT Back



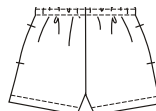
SHIRT Back



PANTS Back



SHORTS Back



**KWIK-SEW®**  
price **3168**

DESIGNED FOR LIGHT TO MEDIUM WEIGHT WOVEN FABRICS  
Suggested Fabrics: Cotton, cotton types, linen, challis, chambray, broadcloth

**GIRLS' SHIRT, PANTS, SHORTS & HAT**  
Sizes: XS (4-5), S (6), M (7-8), L (10), XL (12-14)  
HAT Sizes: S-M-L

Size	XS (4-5)	S (6)	M (7-8)	L (10)	XL (12-14)	
Height	42 (107)	46 (117)	50 (127)	55 (140)	60 (152)	" (cm)
Chest	23 1/2 (60)	25 (64)	26 1/2 (67)	28 1/2 (72)	31 (79)	" (cm)
Waist	22 (56)	23 (58)	24 (61)	25 (64)	27 (68)	" (cm)
Hip	24 (61)	25 1/2 (65)	27 1/2 (70)	30 (76)	32 (81)	" (cm)
Head Circumference	—	19 1/2 (49)	21 (53)	22 1/2 (57)	—	" (cm)
<b>Finished Length of Shirt at Center Back</b>						
	16 1/2 (42)	17 1/2 (45)	19 1/4 (49)	21 (53)	22 3/4 (58)	" (cm)
<b>Finished Inside Leg Seam</b>						
Shorts	1 3/4 (4.5)	2 (5)	2 1/4 (5.5)	2 1/2 (6)	2 3/4 (7)	" (cm)
Pants	11 (28)	12 1/2 (32)	14 (36)	16 (40)	18 (46)	" (cm)
<b>Material Required:</b> Fabric requirement allows for nap, one-way design or shading. Extra fabric may be needed to match design or for shrinkage.						
<b>Fabric 60" (152 cm) Wide</b>						
Shirt	7/8 (0.80)	7/8 (0.80)	1 (0.95)	1 (0.95)	1 (0.95)	yd (m)
Pants	7/8 (0.80)	7/8 (0.80)	1 (0.95)	1 1/8 (1.05)	1 1/4 (1.15)	yd (m)
Shorts	5/8 (0.60)	5/8 (0.60)	3/4 (0.70)	3/4 (0.70)	3/4 (0.70)	yd (m)
Hat	—	5/8 (0.60)	5/8 (0.60)	5/8 (0.60)	—	yd (m)
<b>Fabric 45" (115 cm) Wide</b>						
Shirt	1 1/8 (1.05)	1 1/8 (1.05)	1 1/4 (1.15)	1 3/8 (1.30)	1 1/2 (1.40)	yd (m)
Pants	1 1/8 (1.05)	1 1/8 (1.05)	1 1/4 (1.15)	1 3/8 (1.30)	1 1/2 (1.40)	yd (m)
Shorts	3/4 (0.70)	3/4 (0.70)	3/4 (0.70)	7/8 (0.80)	7/8 (0.80)	yd (m)
Hat	—	7/8 (0.80)	7/8 (0.80)	7/8 (0.80)	—	yd (m)
<b>Fusible Interfacing 24" (60 cm) Wide</b>						
Shirt	5/8 (0.60)	5/8 (0.60)	5/8 (0.60)	3/4 (0.70)	3/4 (0.70)	yd (m)
Hat	—	7/8 (0.80)	7/8 (0.80)	7/8 (0.80)	—	yd (m)

**Notions:** Thread. SHIRT: Four 5/8" (15 mm) buttons. PANTS & SHORTS: 3/8 yd (0.35 m) of 1/2" (12 mm) wide elastic, scrap piece of fusible interfacing.