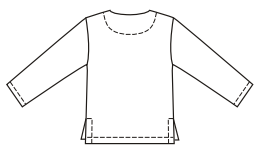
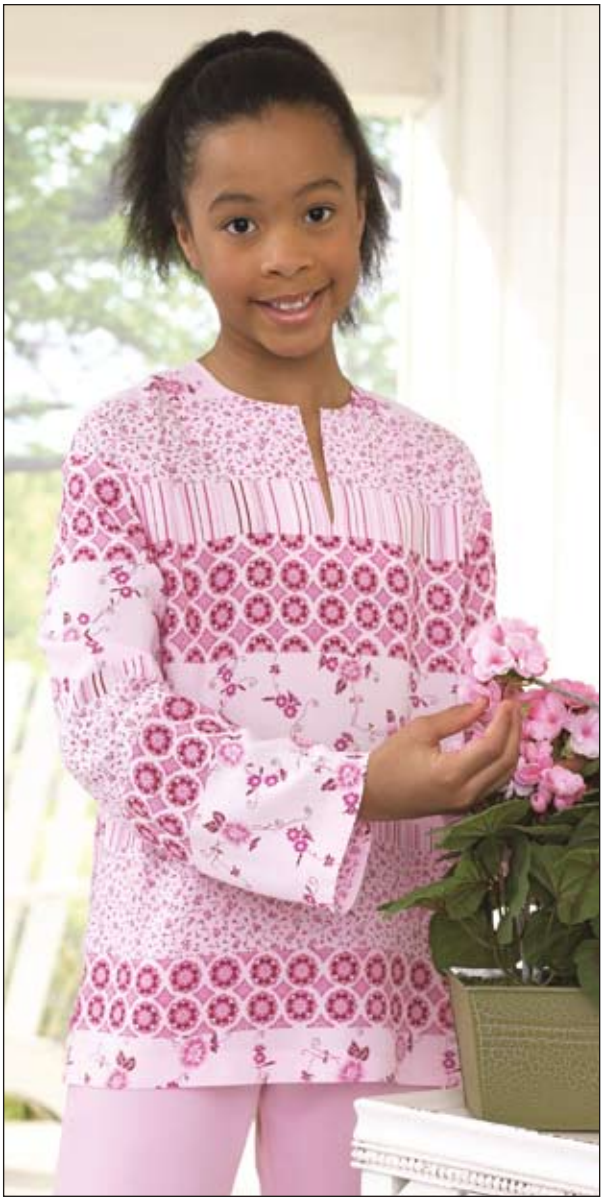


VIEW A Back



VIEW B Back



A

B

Girls' and Boys' pullover tops have extended shoulders, side hemline slits and full-length sleeves. View A has slit at center front, hood, and patch pocket. View B has slit at center front, and neckline finished with facings.

**KWIK·SEW®**  
price **3235**

DESIGNED FOR LIGHT TO MEDIUM WEIGHT WOVEN FABRIC  
Suggested Fabrics: Cotton, cotton types, linen, rayon and blends, shirtings, gauze, challis, denim

**GIRLS' & BOYS' TOPS**  
Sizes: XS(4-5)–S(6)–M(7-8)–L(10)–XL(12-14)

**Standard Body Measurements:**

Size	XS (4-5)	S (6)	M (7-8)	L (10)	XL (12-14)	
Height	42 (107)	46 (117)	50 (127)	55 (140)	60 (152)	" (cm)
Chest	23 1/2 (60)	25 (64)	26 1/2 (67)	28 1/2 (72)	31 (79)	" (cm)
Hip	24 (61)	25 1/2 (65)	27 1/2 (70)	30 (76)	32 (81)	" (cm)
<b>Finished Length at Center Back</b>	17 1/4 (43.5)	18 1/2 (47)	20 (51)	21 1/2 (55)	23 1/2 (59.5)	" (cm)

**Material Required:** Fabric requirement allows for nap, one-way design or shading. Extra fabric may be needed to match design or for shrinkage.

Fabric 60" (152 cm) Wide	View A	View B	Fabric 45" (115 cm) Wide	View A	View B	Fusible Interfacing 24" (60 cm) Wide	View A or B
View A	1 1/8 (1.05)	1 1/4 (1.15)	View A	1 1/2 (1.40)	1 1/2 (1.40)	View A or B	3/8 (0.30)
View B	1 1/8 (1.05)	1 1/8 (1.05)	View B	1 1/8 (1.05)	1 1/8 (1.05)	View A or B	3/8 (0.30)
View A	1 1/8 (1.05)	1 1/4 (1.15)	View A	1 1/2 (1.40)	1 1/2 (1.40)	View A or B	3/8 (0.30)
View B	1 1/8 (1.05)	1 1/8 (1.05)	View B	1 1/8 (1.05)	1 1/8 (1.05)	View A or B	3/8 (0.30)
View A	1 1/2 (1.40)	1 1/2 (1.40)	View A	1 1/2 (1.40)	1 1/2 (1.40)	View A or B	3/8 (0.30)
View B	1 1/8 (1.05)	1 1/8 (1.05)	View B	1 1/8 (1.05)	1 1/8 (1.05)	View A or B	3/8 (0.30)
View A	1 1/2 (1.40)	1 1/2 (1.40)	View A	1 1/2 (1.40)	1 1/2 (1.40)	View A or B	3/8 (0.30)
View B	1 1/8 (1.05)	1 1/8 (1.05)	View B	1 1/8 (1.05)	1 1/8 (1.05)	View A or B	3/8 (0.30)
View A	1 1/2 (1.40)	1 1/2 (1.40)	View A	1 1/2 (1.40)	1 1/2 (1.40)	View A or B	3/8 (0.30)
View B	1 1/8 (1.05)	1 1/8 (1.05)	View B	1 1/8 (1.05)	1 1/8 (1.05)	View A or B	3/8 (0.30)

**Notions:** Thread.