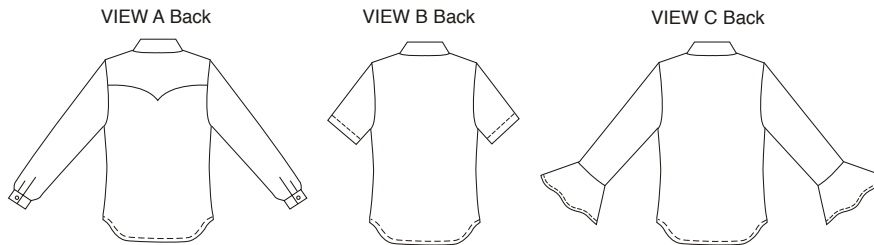




Girls' blouses have collar and stand in one. View A has decorative front and back yokes, front tabs, snap closure, pockets with flaps, and full-length sleeves with cuffs. View B has front tab, button closure, short sleeves, and one pocket. View C has fold-back facings, button closure, and three-quarter length sleeves with flounces.



**KWIK·SEW®**  
**3318**  
 price **3319**

**DESIGNED FOR LIGHTWEIGHT WOVEN FABRICS**

Suggested Fabrics: Cotton, cotton types, broadcloth, oxford cloth, seersucker, satin, charmeuse

**GIRLS' BLOUSES**

3318 Sizes: 4-5-6-7

3319 Sizes: 8-10-12-14

Size	4	5	6	7	8	10	12	14	
Finished Length at Center Back	16 (40)	16 3/4 (42)	17 1/2 (44)	18 1/2 (47)	19 1/2 (49)	20 1/2 (52)	21 1/2 (54)	22 1/4 (56)	" (cm)
<b>Material Required:</b> Fabric requirement allows for nap, one-way design or shading. Extra fabric may be needed to match design or for shrinkage.									
<b>Fabric 60" (152 cm) Wide</b>									
View A	7/8 (0.80)	7/8 (0.80)	7/8 (0.80)	1 (0.95)	1 1/4 (1.15)	1 1/4 (1.15)	1 3/8 (1.30)	1 3/8 (1.30)	yd (m)
View B	7/8 (0.80)	7/8 (0.80)	7/8 (0.80)	7/8 (0.80)	7/8 (0.80)	1 (0.95)	1 (0.95)	1 1/8 (1.05)	yd (m)
View C	7/8 (0.80)	7/8 (0.80)	7/8 (0.80)	1 (0.95)	1 1/8 (1.05)	1 1/8 (1.05)	1 1/4 (1.15)	1 1/4 (1.15)	yd (m)
<b>Fabric 45" (115 cm) Wide</b>									
View A	1 1/8 (1.05)	1 1/4 (1.15)	1 1/4 (1.15)	1 3/8 (1.30)	1 1/2 (1.40)	1 1/2 (1.40)	1 5/8 (1.50)	1 5/8 (1.50)	yd (m)
View B	7/8 (0.80)	7/8 (0.80)	7/8 (0.80)	7/8 (0.80)	1 (0.95)	1 (0.95)	1 1/4 (1.15)	1 3/8 (1.30)	yd (m)
View C	1 (0.95)	1 (0.95)	1 (0.95)	1 1/8 (1.05)	1 1/2 (1.40)	1 5/8 (1.50)	1 3/4 (1.60)	1 7/8 (1.75)	yd (m)
<b>Fusible Interfacing 24" (60 cm) Wide</b>									
View A & B	1/2 (0.50)	1/2 (0.50)	1/2 (0.50)	5/8 (0.60)	5/8 (0.60)	5/8 (0.60)	5/8 (0.60)	5/8 (0.60)	yd (m)
View C	5/8 (0.60)	5/8 (0.60)	5/8 (0.60)	5/8 (0.60)	5/8 (0.60)	3/4 (0.70)	3/4 (0.70)	3/4 (0.70)	yd (m)
<b>Notions:</b> Thread. VIEW A: One 1/2" (12 mm) button, 1/2" (12 mm) snaps – eight for sizes 4-5-6-7; nine for sizes 8-10-12-14.									
VIEW B & C: 1/2" (12 mm) buttons – five for sizes 4-5-6-7, six for sizes 8-10-12-14.									