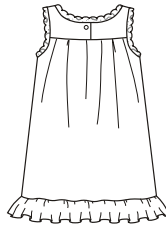


Toddlers' nightgowns have front and back gathered to yoke, and ruffle at bottom edge. View A has double yoke with front button closure, collar, and gathered sleeves with elastic at wrists. Lace or trim is optional on collar, bottom edge and sleeves. View B has single yoke with back button closure. Neckline and armholes are finished with lace.

VIEW A Back



VIEW B Back



BABY & TODDLER

KWIK·SEW®
price **3423**

DESIGNED FOR LIGHT TO MEDIUM WEIGHT WOVEN AND FIRM KNIT FABRICS

Suggested Fabrics: Cotton, cotton types, flannel, brushed nylon, silk, silk-like fabrics, brushed satin

TODDLERS' NIGHTGOWNS

Sizes: T1-T2-T3-T4

Size	T1	T2	T3	T4	
Finished Length at Center Back from Neckline					
View A	22 1/2 (57)	25 (63)	27 (69)	29 1/2 (75)	" (cm)
View B	20 1/2 (52)	22 (56)	23 1/2 (60)	25 1/2 (65)	" (cm)
Material Required: Fabric requirement allows for nap, one-way design or shading. Extra fabric may be needed to match design or for shrinkage.					
Fabric 60" (152 cm) Wide					
View A	1 3/8 (1.30)	1 3/8 (1.30)	1 1/2 (1.40)	1 5/8 (1.50)	yd (m)
View B	3/4 (0.70)	7/8 (0.80)	7/8 (0.80)	7/8 (0.80)	yd (m)
Fabric 45" (115 cm) Wide					
View A	1 3/8 (1.30)	1 5/8 (1.50)	1 3/4 (1.60)	1 7/8 (1.75)	yd (m)
View B	7/8 (0.80)	1 (0.95)	1 3/8 (1.30)	1 3/8 (1.30)	yd (m)
Notions: Thread, scrap piece of fusible interfacing. VIEW A: Optional - 3 1/2 yd (3.20 m) of pregathered eyelet or lace. VIEW B: 1 5/8 yd (1.50 m) of narrow edging lace.					